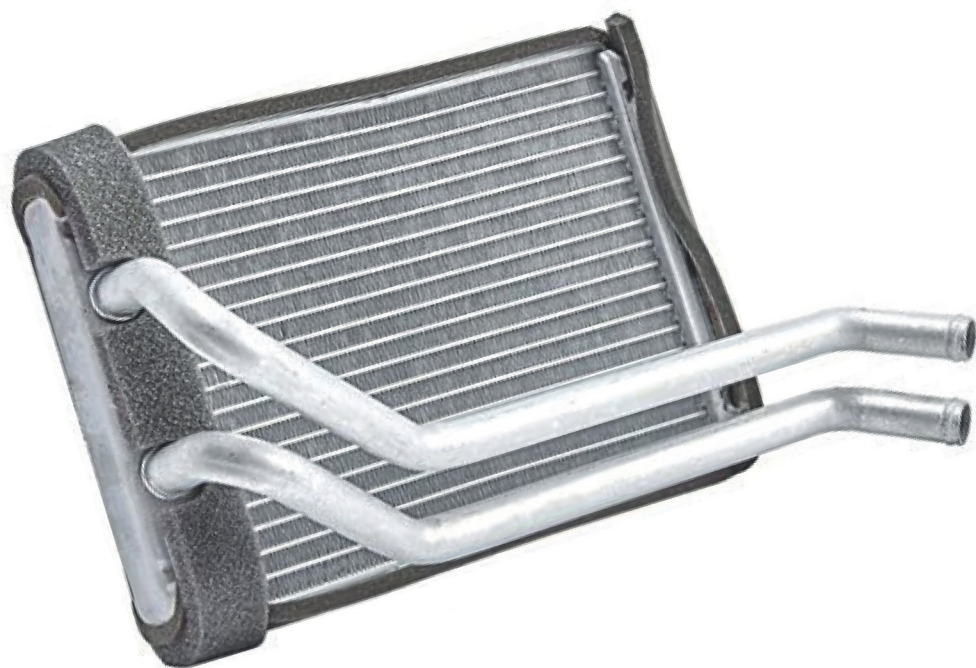


**Japanparts®**



HEAT  
EXCHANGER/INTERIOR  
HEATING  
RADIATORI/SCAMBIATORI  
CALORE PER  
RISCALDAMENTO



[www.japanparts.eu](http://www.japanparts.eu)

**CATALOGUE**  
FOR CARS AND  
COMMERCIAL VEHICLES

**CATALOGO**  
PER AUTOMOBILI E VEICOLI  
COMMERCIALI

## HEAT EXCHANGER/INTERIOR HEATING

### RADIATORI/SCAMBIATORI CALORE PER RISCALDAMENTO



**RSD093014**

**2711500QAC**



NISSAN INTERSTAR Autobus (X70) dCi 100  
NISSAN INTERSTAR Autobus (X70) dCi 120  
NISSAN INTERSTAR Autobus (X70) dCi 140  
NISSAN INTERSTAR Autobus (X70) dCi 150

**RSD093015**

**7701205538**



NISSAN KUBISTAR (X76) 1.2  
NISSAN KUBISTAR (X76) 1.2 16V  
NISSAN KUBISTAR (X76) 1.5 dCi  
NISSAN KUBISTAR (X76) 1.5 dCi 70  
NISSAN KUBISTAR (X76) 1.5 dCi 85  
NISSAN KUBISTAR (X76) 1.6 16V  
RENAULT KANGOO (KC0/1\_) 1.2 (KC0A, KC0K, KC0F, KC01)

**RSD093018**

**27140AX700**



NISSAN MICRA C+C (K12) 1.4 16V  
NISSAN MICRA C+C (K12) 1.6 160 SR  
NISSAN MICRA III (K12) 1.0 16V  
NISSAN MICRA III (K12) 1.2 16V  
NISSAN MICRA III (K12) 1.4 16V  
NISSAN MICRA III (K12) 1.5 dCi  
NISSAN MICRA III (K12) 160 SR

**RSD283001**

**9712302000**



HYUNDAI ATOS (MX) 0.8  
HYUNDAI ATOS (MX) 1.0 i  
HYUNDAI ATOS (MX) 1.1  
HYUNDAI ATOS PRIME (MX) 1.0 i  
HYUNDAI ATOS PRIME (MX) 1.1

**RSD283004**

**972273A000**



HYUNDAI TRAJET (FO) 2.0  
HYUNDAI TRAJET (FO) 2.0 CRDi  
HYUNDAI TRAJET (FO) 2.7 V6

**RSD283005**

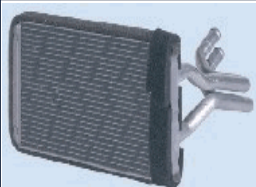
**9722726000**



HYUNDAI SANTA FÉ I (SM) 2.0  
HYUNDAI SANTA FÉ I (SM) 2.0 CRDi  
HYUNDAI SANTA FÉ I (SM) 2.0 CRDi 4 ruote motrici  
HYUNDAI SANTA FÉ I (SM) 2.0 CRDi 4x4  
HYUNDAI SANTA FÉ I (SM) 2.2 CRDi  
HYUNDAI SANTA FÉ I (SM) 2.2 CRDi 4x4  
HYUNDAI SANTA FÉ I (SM) 2.4 16V

**RSD283006**

**9713817000**



HYUNDAI MATRIX (FC) 1.5 CRDi  
HYUNDAI MATRIX (FC) 1.5 CRDi VGT  
HYUNDAI MATRIX (FC) 1.6  
HYUNDAI MATRIX (FC) 1.8

**RSD283007**

**9722122000**



HYUNDAI ACCENT I (X-3) 1.3  
HYUNDAI ACCENT I (X-3) 1.3 i 12V  
HYUNDAI ACCENT I (X-3) 1.5 i 12V  
HYUNDAI ACCENT I (X-3) 1.5 i 16V  
HYUNDAI ACCENT II (LC) 1.3  
HYUNDAI ACCENT II (LC) 1.5  
HYUNDAI ACCENT II (LC) 1.5 CRDi  
HYUNDAI ACCENT II (LC) 1.6

**RSD283010**

**970234A000**



HYUNDAI H-1 / STAREX 2.4  
HYUNDAI H-1 / STAREX 2.4 4WD  
HYUNDAI H-1 / STAREX 2.5 D  
HYUNDAI H-1 / STAREX 2.5 TCi  
HYUNDAI H-1 / STAREX 2.5 TD  
HYUNDAI H-1 / STAREX 2.5 TD 4WD  
HYUNDAI H-1 Furgonato 2.4  
HYUNDAI H-1 Furgonato 2.5 TD

**RSD283011**

**97010H1729**



HYUNDAI TERRACAN (HP) 2.5 D  
HYUNDAI TERRACAN (HP) 2.5 TD  
HYUNDAI TERRACAN (HP) 2.9 CRDi  
HYUNDAI TERRACAN (HP) 3.5 i V6 4WD

**RSD313001**

**96314858**



CHEVROLET MATIZ (M200, M250) 0.8  
CHEVROLET MATIZ (M200, M250) 1.0  
DAEWOO MATIZ (KLYA) 0.8  
DAEWOO MATIZ (KLYA) 1.0  
DAEWOO MATIZ Furgonato (KLA4) 0.8

**RSD313002**

**96190674**



CHEVROLET LANOS 2 volumi /Coda spiovente 1.4  
CHEVROLET LANOS Tre volumi 1.4  
DAEWOO LANOS (KLAT) 1.4  
DAEWOO LANOS (KLAT) 1.5  
DAEWOO LANOS (KLAT) 1.6 16V  
DAEWOO LANOS Tre volumi (KLAT) 1.4  
DAEWOO LANOS Tre volumi (KLAT) 1.5

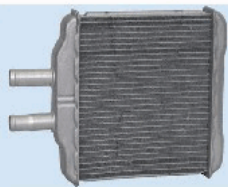
## HEAT EXCHANGER/INTERIOR HEATING

### RADIATORI/SCAMBIATORI CALORE PER RISCALDAMENTO



#### RSD313007

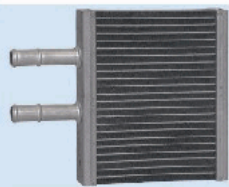
96554446



CHEVROLET NUBIRA Station wagon 1.5  
CHEVROLET NUBIRA Station wagon 1.6  
CHEVROLET NUBIRA Station wagon 1.8  
CHEVROLET NUBIRA Station wagon 2.0  
CHEVROLET NUBIRA Station wagon 2.0 D  
CHEVROLET NUBIRA Tre volumi 1.4  
CHEVROLET NUBIRA Tre volumi 1.5

#### RSD313008

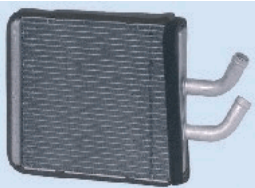
96539642



CHEVROLET AVEO Tre volumi (T250, T255) 1.2  
CHEVROLET AVEO Tre volumi (T250, T255) 1.4  
CHEVROLET AVEO Tre volumi (T250, T255) 1.5  
CHEVROLET AVEO Tre volumi (T250, T255) 1.6  
CHEVROLET KALOS 1.4 16V

#### RSD333002

0K30A61130D



KIA RIO Station wagon (DC) 1.3  
KIA RIO Station wagon (DC) 1.5  
KIA RIO Tre volumi (DC\_) 1.3  
KIA RIO Tre volumi (DC\_) 1.5

#### RSD333007

972273E000



KIA SORENTO I (JC) 2.4  
KIA SORENTO I (JC) 2.5 CRDi  
KIA SORENTO I (JC) 3.3 V6  
KIA SORENTO I (JC) 3.5 V6

#### SC-DW0

96314858



DAEWOO MATIZ (KLYA) 0.8  
DAEWOO MATIZ (KLYA) 1.0  
DAEWOO MATIZ Furgonato (KLA4) 0.8