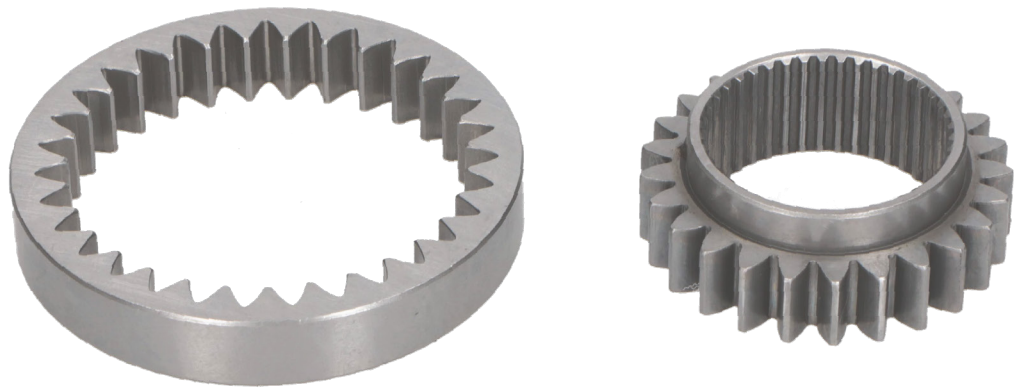


**Japanparts®**



**OIL PUMP GEAR KIT**  
**KIT INGRANAGGI**  
**POMPA OLIO**



[www.japanparts.eu](http://www.japanparts.eu)

**CATALOGUE**  
FOR CARS AND  
COMMERCIAL VEHICLES

**CATALOGO**  
PER AUTOMOBILI E VEICOLI  
COMMERCIALI

**OIL PUMP GEAR KIT**

**KIT INGRANAGGI POMPA OLIO**



**GK-NI000**

**15121-54010**



TOYOTA HIACE II Wagon (LH7\_, LH5\_, LH6\_, YH7\_, YH6\_, YH5\_ 2.4 D (H5G)  
TOYOTA HIACE III Furgonato (YH7\_, LH6\_, LH7\_, LH5\_, YH5\_ 2.4 D 4WD  
TOYOTA HIACE III Furgonato (YH7\_, LH6\_, LH7\_, LH5\_, YH5\_ 2.4 Diesel  
TOYOTA HIACE III Wagon (LH1\_, RZH1\_) 2.4 D (LH102)

**GK-TY00**

**15103-31050**



TOYOTA FJ CRUISER (GSJ1\_) 4.0 i V6  
TOYOTA LAND CRUISER 150 (KDJ15\_, GRJ15\_) 4.0 V6 VVT-i  
TOYOTA LAND CRUISER 150 (KDJ15\_, GRJ15\_) 4.0 V6 VVTi

**GK-TY01**

**11310-31020**



TOYOTA AVALON Tre volumi (GSX3\_) 3.5 VVTi  
TOYOTA PREVIA (MCR3\_, ACR3\_, CLR3\_) 3.5  
TOYOTA PREVIA (MCR3\_, ACR3\_, CLR3\_) 3.5 4x4  
TOYOTA RAV 4 III (ACA3\_, ACE\_, ALA3\_, GSA3\_, ZSA3\_) 3.5 VVTi

**GK-TY03**

TOYOTA YARIS VERSO (\_NLP2\_, \_NCP2\_) 1.5 (NCP21)



**GK-TY04**

TOYOTA YARIS (SCP1\_, NLP1\_, NCP1\_) 1.0 16V  
TOYOTA YARIS (SCP1\_, NLP1\_, NCP1\_) 1.0 16V (SCP10\_)



**GK-TY05**

TOYOTA PRIUS 2 volumi /Coda spiovente (NHW20\_) 1.5



**GK-TY06**

**11301-75021**



TOYOTA 4 RUNNER (RN10\_, VZN13\_, VZN10\_, RN13\_) 2.7 i 4x4  
TOYOTA COASTER Autobus (TRB5\_, XZB5\_, RZB4\_, HZB5\_, BZB5\_ 2.7  
TOYOTA DYNA 200 Pianale piatto/Telaio 2.7  
TOYOTA HILUX Fuoristrada chiuso (RZN1\_, LN1\_) 2.7

**GK-TY07**

**15103-75010**



TOYOTA DYNA 300 Pianale piatto/Telaio 2.4  
TOYOTA HILUX II Pick-up (RN6\_, RN5\_, LN6\_, YN6\_, YN5\_, LN 2.4  
TOYOTA HILUX II Pick-up (RN6\_, RN5\_, LN6\_, YN6\_, YN5\_, LN 2.4 AWD  
TOYOTA HILUX II Pick-up (RN6\_, RN5\_, LN6\_, YN6\_, YN5\_, LN 2.4 i 4WD  
TOYOTA TACOMA Pick-up 2.4

**GK-TY08**

**15103-75010**



TOYOTA HIACE III Furgonato (YH7\_, LH6\_, LH7\_, LH5\_, YH5\_ 2.0  
TOYOTA HIACE III Wagon (LH1\_, RZH1\_) 2.0 (RZH102)  
TOYOTA HILUX II Pick-up (RN6\_, RN5\_, LN6\_, YN6\_, YN5\_, LN 2.0

**GK-TY09**

**15103-75010**



TOYOTA HIACE III Furgonato (YH7\_, LH6\_, LH7\_, LH5\_, YH5\_ 2.0  
TOYOTA HIACE III Wagon (LH1\_, RZH1\_) 2.0 (RZH102)  
TOYOTA HILUX II Pick-up (RN6\_, RN5\_, LN6\_, YN6\_, YN5\_, LN 2.0

**GK-TY10**

**11310-75070**



TOYOTA 4 RUNNER (TRN28\_, GRN28\_) 2.7  
TOYOTA DYNA Pianale piatto/Telaio (KD\_, LY\_, TRY2\_, KDY2\_ 2.7  
TOYOTA FORTUNER Fuoristrada chiuso (TGN6\_, KUN6\_, GGN6\_ 2.7 VVTi  
TOYOTA FORTUNER Fuoristrada chiuso (TGN6\_, KUN6\_, GGN6\_ 2.7 VVTi 4x4

**GK-TY11**

TOYOTA DYNA Pianale piatto/Telaio (KD\_, LY\_, TRY2\_, KDY2\_ 2.0  
TOYOTA DYNA Pianale piatto/Telaio (KD\_, LY\_, TRY2\_, KDY2\_ 2.0 4WD



OIL PUMP GEAR KIT

KIT INGRANAGGI POMPA OLIO



GK-TY12

15121-54020



TOYOTA LAND CRUISER (KDJ12\_,  
GRJ12\_) 3.0 D

GK-TY13

13519-54010



TOYOTA HIACE II Wagon (LH7\_, LH5\_,  
LH6\_, YH7\_, YH6\_, YH5\_ 2.4 D (H5G)  
TOYOTA HIACE III Furgonato (YH7\_,  
LH6\_, LH7\_, LH5\_, YH5\_ 2.4 D 4WD  
TOYOTA HIACE III Furgonato (YH7\_,  
LH6\_, LH7\_, LH5\_, YH5\_ 2.4 Diesel  
TOYOTA HIACE III Wagon (LH1\_, RZH1\_)  
2.4 D (LH102)